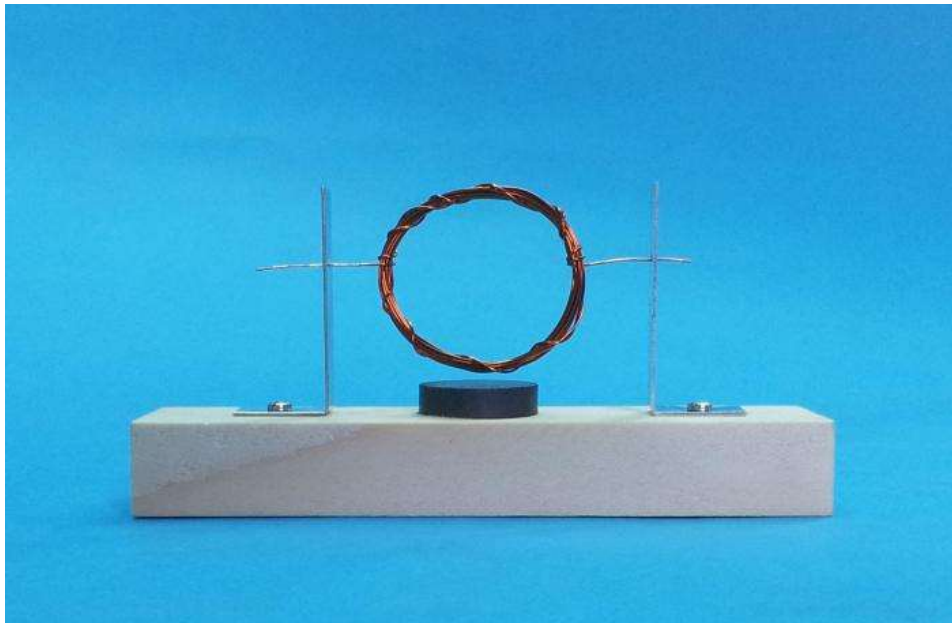


## IZRADA MODELA ELEKTROMOTORA

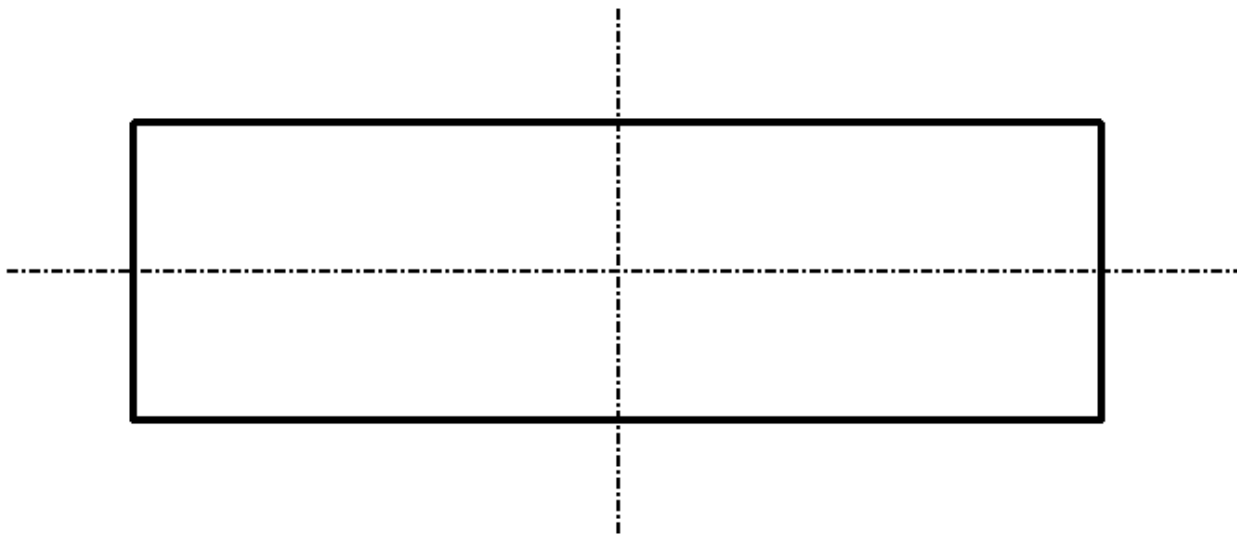
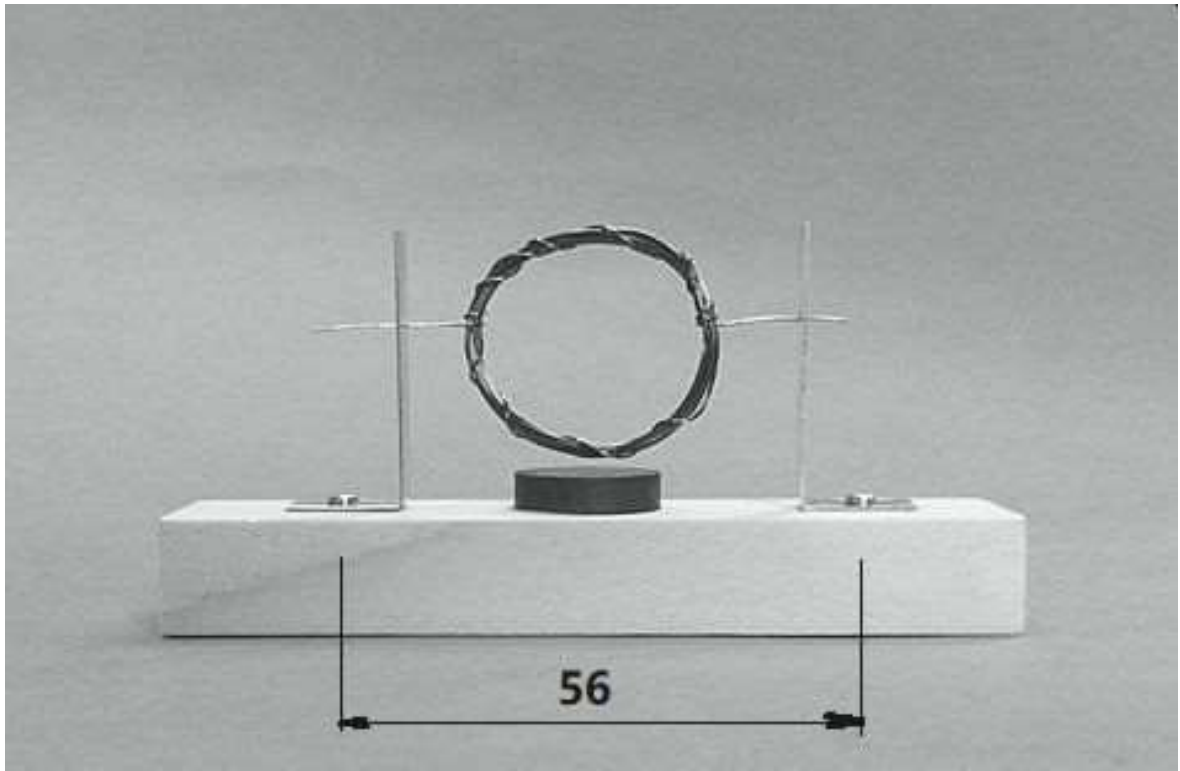
Radni materijal:

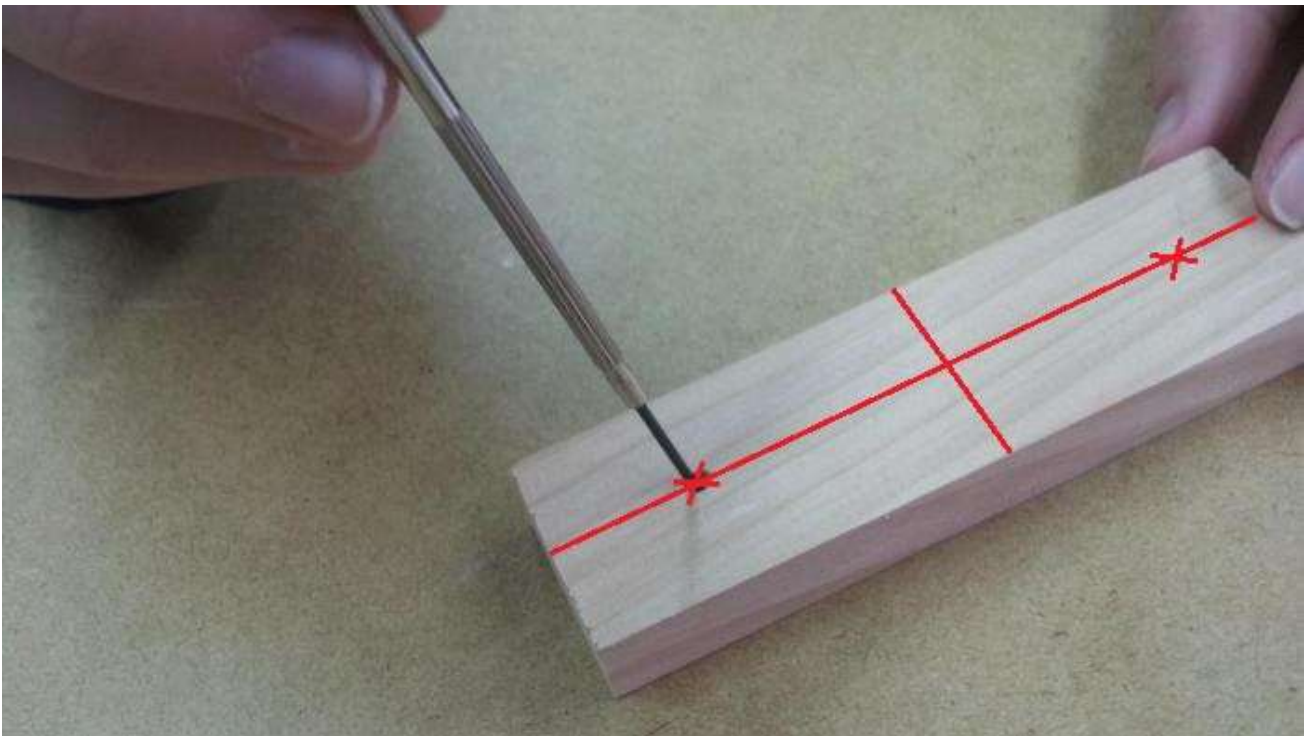
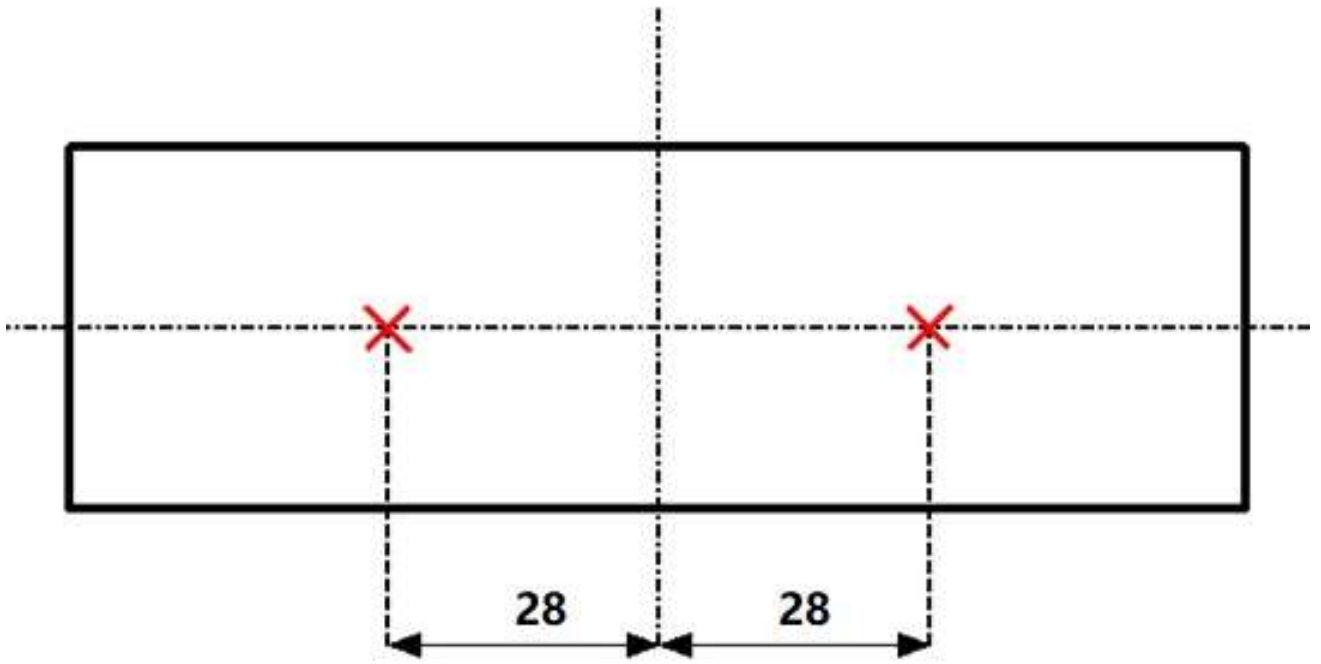


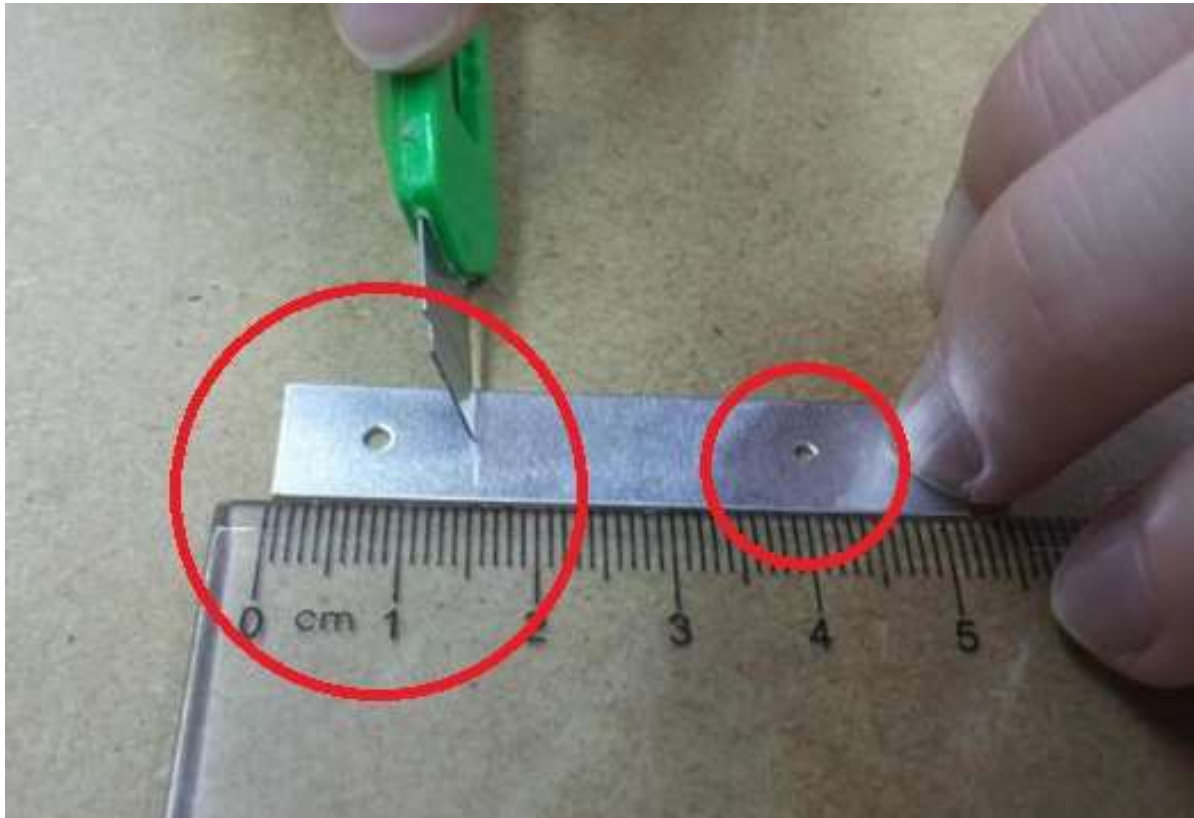
Upute: RL 33. - 36.



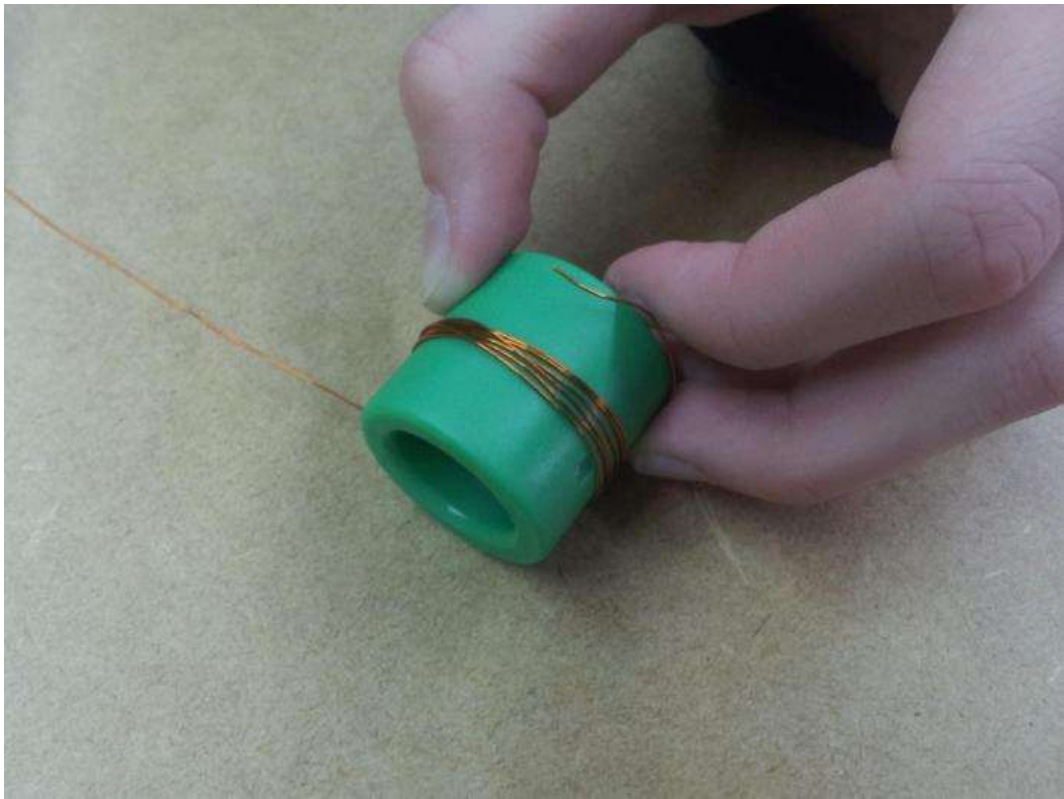
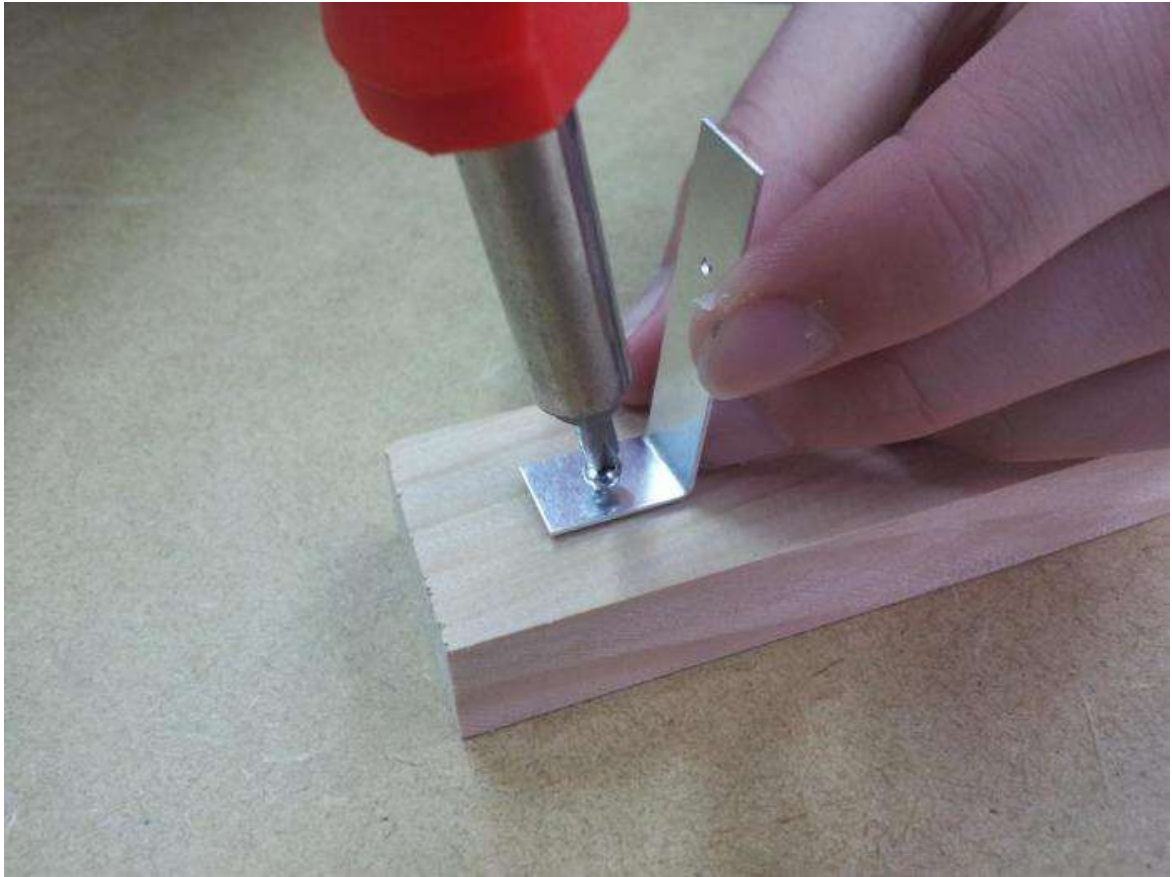
Izgled gotovog modela

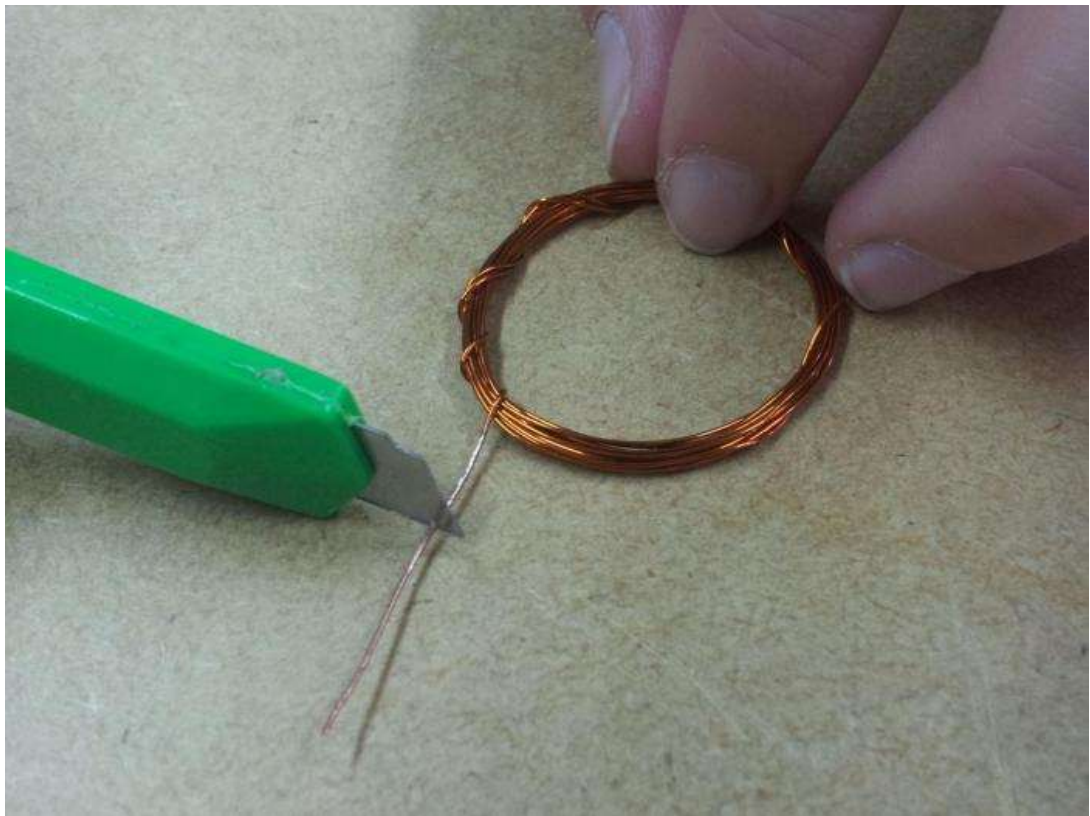














RL – 36. !

### ELEKTROMAGNETIZAM

ELEKTRO-MAGNETIZAM	MAGNETO-ELEKTRIZAM
<b>STRUJA</b> prolazi kroz žicu (zavojnicu) i ⇒ pomiče iglu kompasu (magnet).	<b>MAGNET</b> pomičemo kraj zavojnice (žice) ili zavojnicu pomičemo kraj magnetu ⇒ stvara el. struju.
Otkrio H.C. Oersted (1820.) Iz tog otkrića nastaje <b>ELEKTROMOTOR</b>	Otkrio M. Faraday (1821.) iz tog otkrića nastaje <b>GENERATOR</b>